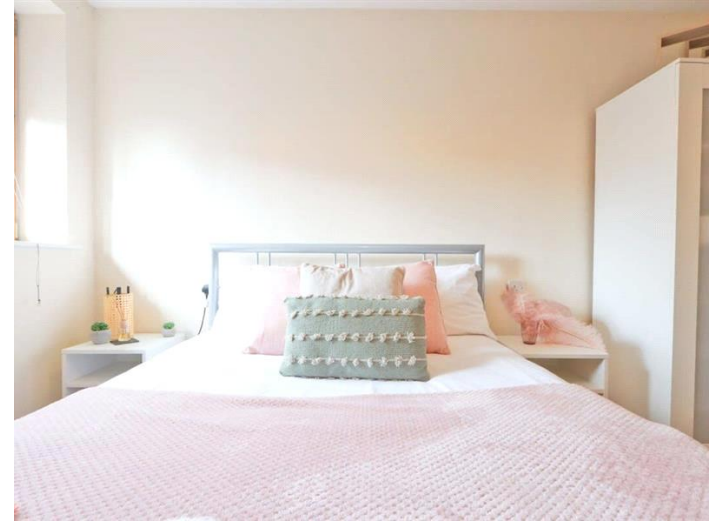




Medium Term Letting refers to rental agreements typically lasting between one and six months. This type of letting is ideal for people who need accommodation for a short period, such as business travelers on extended business trips or projects; relocating individuals/families looking for temporary housing while they search for a permanent home; home renovators; students attending courses etc. The benefits of a Medium Term Letting are: flexibility; fully furnished properties; all-Inclusive rental (utilities, internet, and other services); convenient locations close to business districts, schools, or city centre

Deposit: £500



Whilst every effort is made to ensure the accuracy of these details, it should be noted that the measurements are approximate only. Floorplans are for representation purposes only and prepared according to the RICS Code of Measuring Practice by our floorplan provider. Therefore, the layout of doors, windows and rooms are approximate and should be regarded as such by any prospective tenant.

